

Washoe County Planning Commission



WAB25-0003 (Red Rock Road)

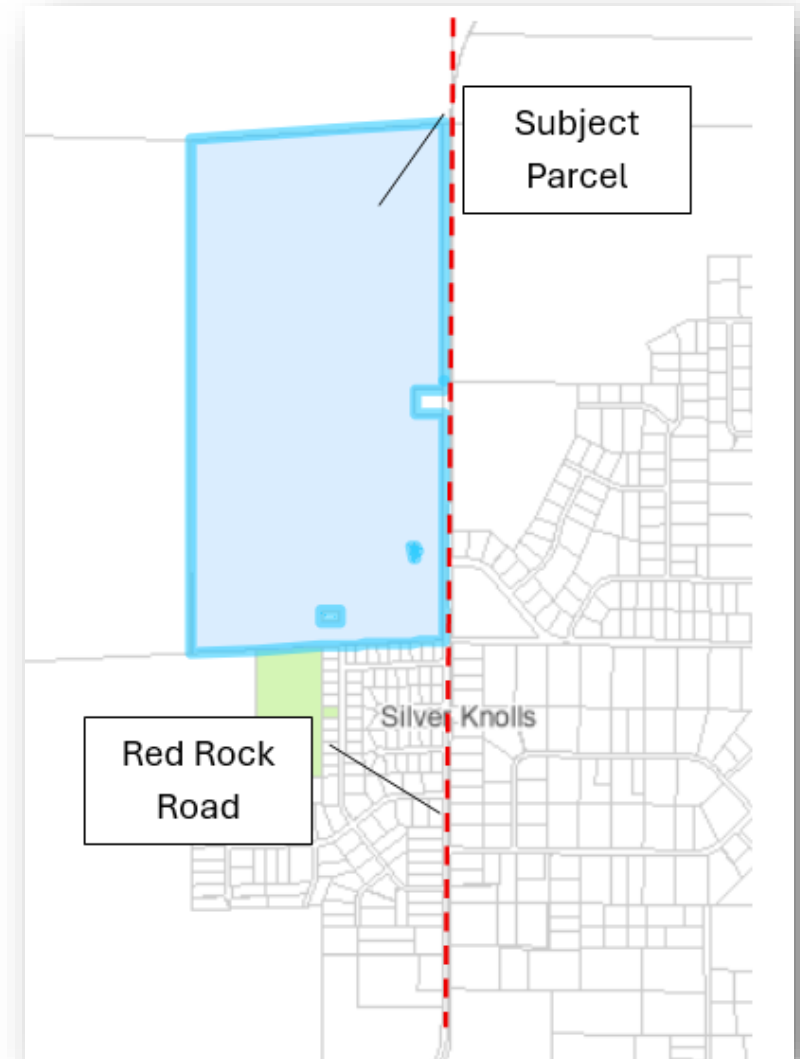
August 5, 2025

Request

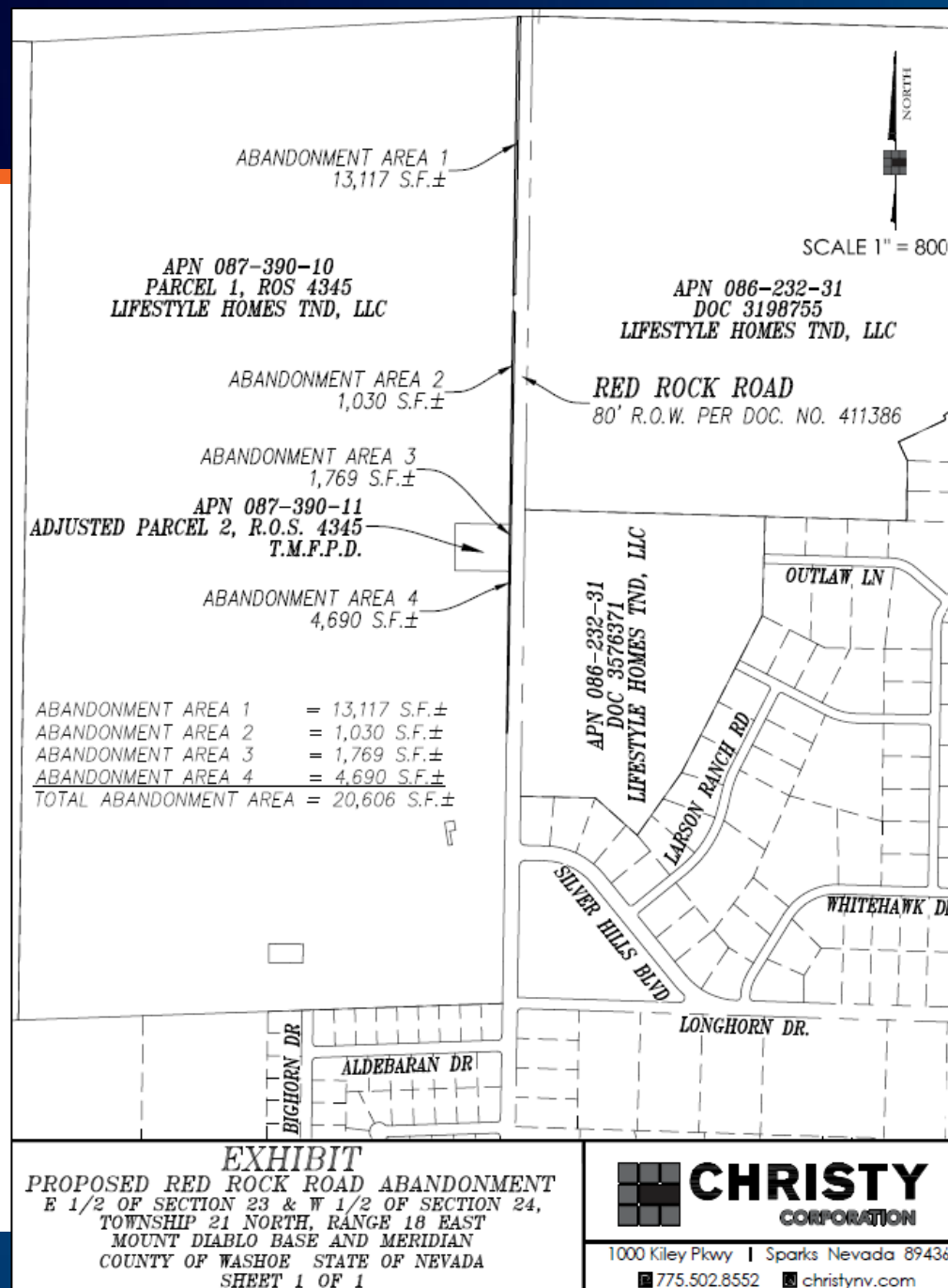


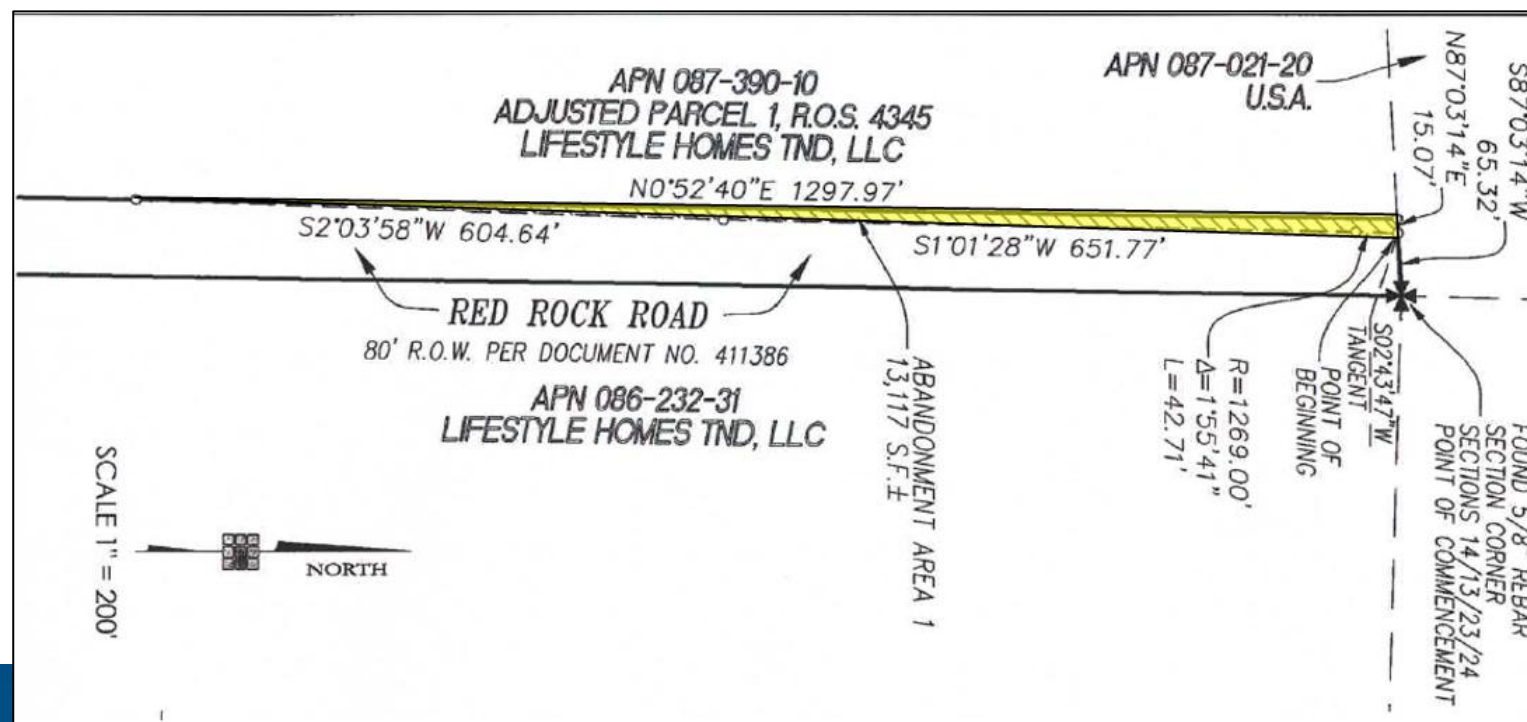
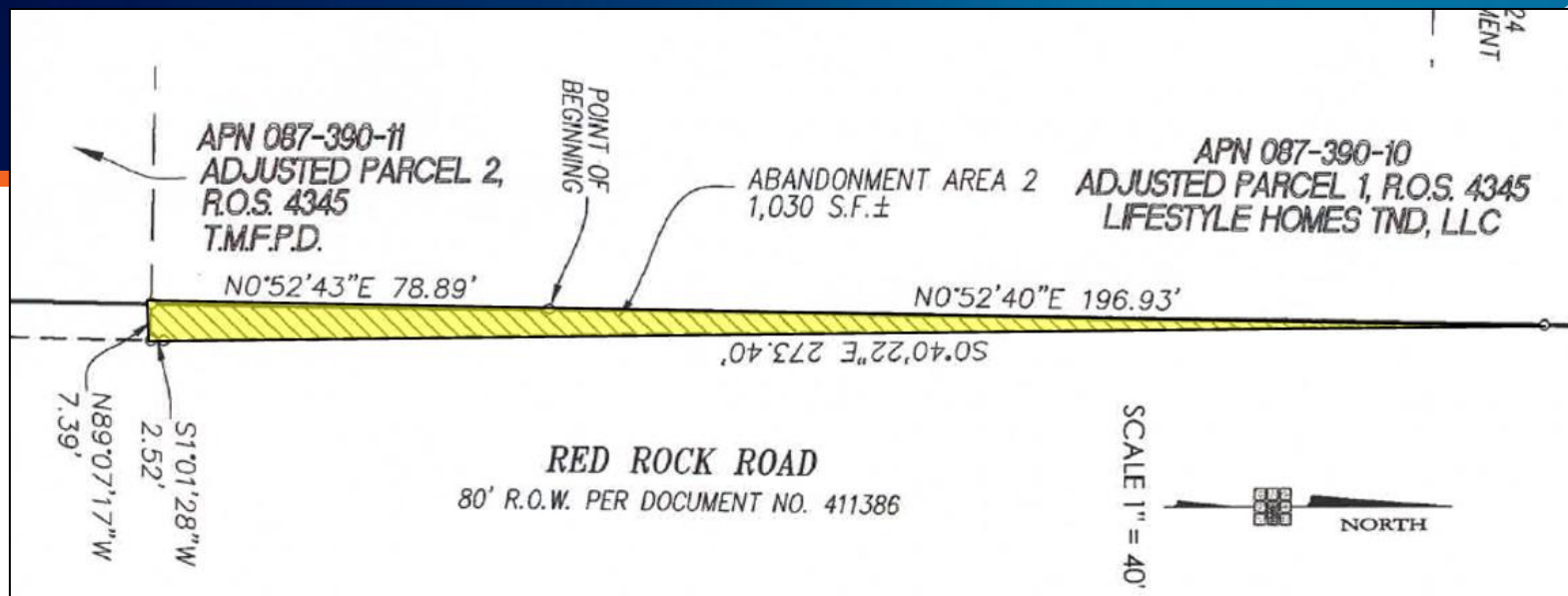
COMMUNITY
SERVICES DEPARTMENT

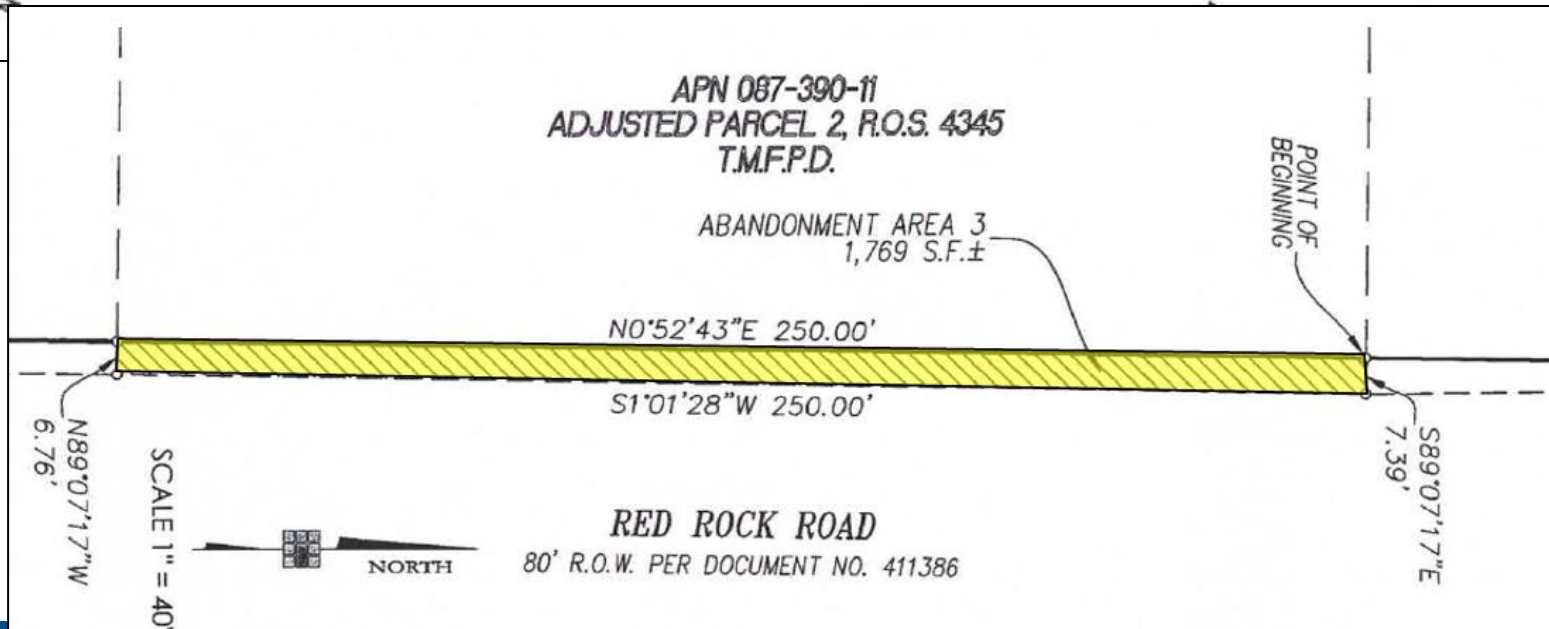
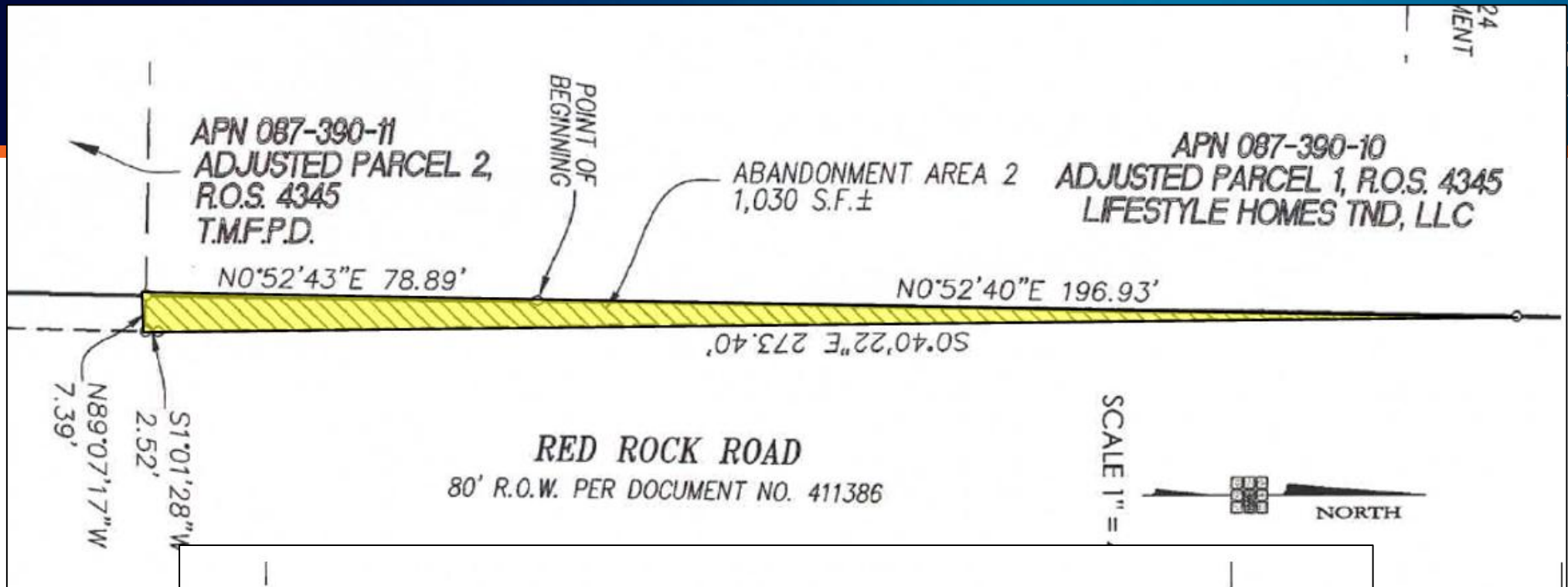
Abandonment of Washoe County's interest in 20,606 square feet of right-of-way along Red Rock Road on APNs 087-390-10 and 087-380-11.



- Parcel one is 308.6-acres and has a regulatory zone of Specific Plan (Silver Hills).
 - This portion of the project area has an approved tentative map (WTM21-0006) for a 358-lot, single-family residential, common open space subdivision, with lots ranging in size from 5,000 square feet to 8,000 square feet.
- The 2nd parcel is owned by the Truckee Meadows Fire Protection District who operate a volunteer fire station. The parcel is zoned PSP.
- The request is intended to accommodate the realignment of Red Rock Road and for future residential development as approved.
- The Regional Transportation Commission confirmed in a letter to staff that “the proposed abandonment is in conformance with the requirements of the Red Rock Road widening project”. See Attachment B to the staff report.







Noticing

Abutting property owners were noticed;
no emails or phone calls
were received.



Reviewing Agencies & Findings



- Necessary agencies reviewed the application; their comments are included in the staff report.
- Agencies with conditions are included in the Conditions of Approval.
- Staff can make all the findings as explained in the staff report.

I move that, after giving reasoned consideration to the information contained in the staff report and information received during the public hearing, the Washoe County Planning Commission approve Abandonment Case Number WAB25-0003 for Christy Corporation, with the conditions included as Exhibit A to this matter, having made all three findings in accordance with Washoe County Code Section 110.806.20.

Thank you

Courtney Weiche, Senior Planner
Washoe County CSD – Planning Division
cweiche@washoecounty.gov
775-328-3608

